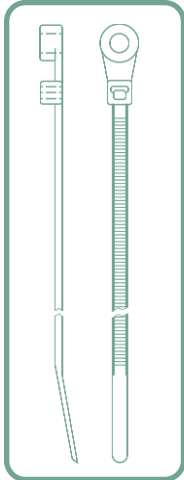


# Nylon Cable Ties CONTINUED

## VALUE-LINE – SCREW MOUNTABLE



Part No.	Approximate Length	Maximum Bundle Dia.	Minimum Tensile Strength	Suggested Mounting Screw Size	Minimum Order Qty.
<b>Standard Duty</b>					
VMNT5-30	6	1-1/4	30	8	1000
VMNT7-50	7-1/2	1-3/4	50	10	1000
VMNT11-50	11	3	50	10	1000
VMNT14-50	14-1/2	4	50	10	500
<b>Heavy Duty</b>					
VMNT14-120	14-1/2	4	120	1/4	100

UV Black available at an additional charge.

### Care and Feeding of Nylon Cable Ties (and other nylon parts)

Here are the two most common problems that come up for customers using nylon cable ties. You will be pleased to know that these two problems can almost always be corrected without having to return the ties.

**Brittle ties:** When bags of cable ties are sealed at the factory, a few drops of water are added to keep the ties from drying out. Due to the nature of nylon, it is recommended that you not open sealed bags until you need to use the ties and that you re-seal them when

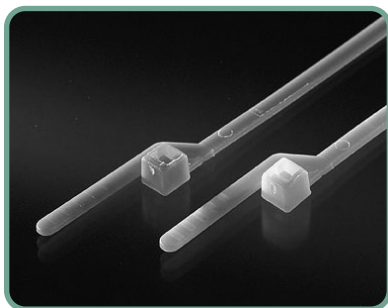
not in use. When storing bags of cable ties, keep them in an area where they won't be affected by heat and dry atmospheres. These suggestions hold true for most nylon parts.

If you find you have a bunch of ties that have become brittle, put them in a plastic bag with 1/4 teaspoon of water and seal the bag. (If you put in more water than that, the ties will get rubbery and you'll have to let them dry out again!) Leave them overnight. Chances are the next day the ties will be fine again. If, however, you still find the ties are brittle, please call us.

### Locking mechanism "breaking out":

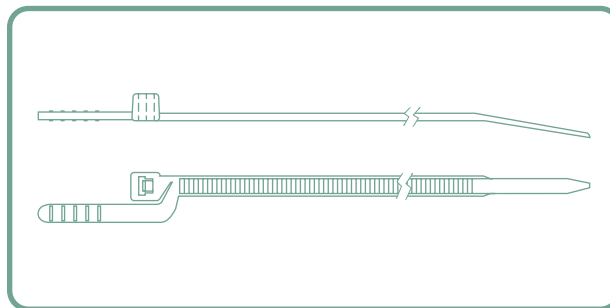
There are usually two reasons for this. The first is that the tension setting on the tightening tool/tie gun being used may be set too high and needs to be adjusted. The other reason is that the ties are being incorrectly tightened by hand. When inserting the tail into the locking mechanism, it should be pulled through in a straight line. It should not be pulled and bent back in the same manner one inserts a belt into a buckle.

## E-Z OFF™



Our E-Z Off™ cable ties are the first permanent cable tie designed specifically to be quickly and safely removed by hand. They provide ease of application, a strong, secure locking device and easy removal without the need of a cutting device.

Simply pull down the tear-off arm located on the right side of the head of the tie.



Manufactured in either nylon or polypropylene, they are available in natural as well as red, blue, green, orange, yellow and black as standard colours. Special colours are also available.

They are perfect for securing shipping containers, attaching sports netting, tag attaching, tenting, temporary job-site cabling, agricultural uses, Tier 1 and 2 automotive suppliers or anywhere a tie is

used as a temporary securing device.

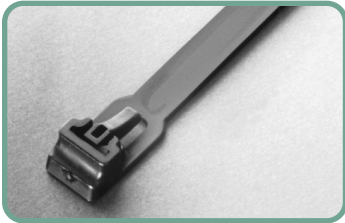
They are 5.5" and 8" in length and have a tensile strength of 50 lb. (nylon ties) or 40 lb. (polypropylene). Standard packaging is 1000 ties per bag.

Custom printing is also available. Please call for a quotation.



# Nylon Cable Ties CONTINUED

## RELEASABLE

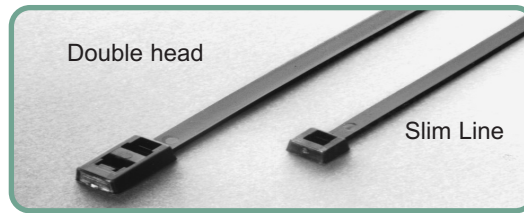
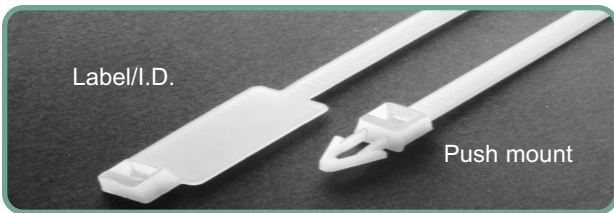


Ideal for use in prototype construction and in areas requiring servicing or addition of wires in existing situations.

Part No.	Overall Length	Maximum Bundle Diameter	Tensile Strength (lbs.)
RT 5-50	5-1/2	1-1/4	50
RT 6-50	6-1/2	1-3/8	
RT 8-50	8-1/2	2	
RT 9-50	10	2-1/2	
RT 15-150	15	4	175
RT 21-150	21	6	
RT 32-150	32	9	
RT 9-250	9	2	250
RT 20-250	20	5	
RT 22-250	23	6	
RT 29-250	29	8	
RT 35-250	35	10	
RT 41-250	40	12	

Minimums available on request.

## BAR-LOK®



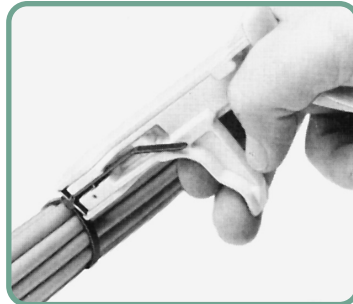
Part No.	Type	Length	Maximum Bundle Diameter	Min. Tensile Strength (lbs)
D 10325	Slim Line	8	2.125	18
D 10425	Double Head	7.5	1.750	50
D 10430	Double Head	11	3.000	50
D 8412	Label / I.D.	4	.875	18
D 8413	Label / I.D.	7.5	1.750	50
D 8414	Push Mount	7.5	1.750	50
D 10355	Push Mount	11	3.000	50

Minimum order 1000.  
Packed in bags of 1000 only.

## ➤ Nylon Cable Tie Tensioning Tools



Part No. 0998



Part No. 0999

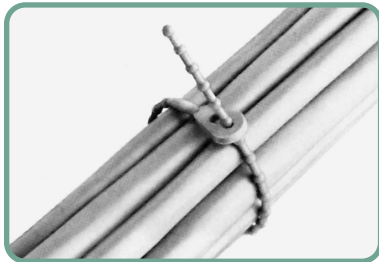
### Part No. 0998

The standard tool fits all standard duty ties. Metal construction has three tension settings and automatically trims excess.

### Part No. 0999

Use the "Twist Trim Tool", for standard duty ties. Low cost, durable construction. Tightens conventionally, then trims with a twist of the wrist. Also available in heavy-duty version.

## ➤ Beaded Ties



Releasable and re-useable ties for easy binding, closing, bagging, holding and tying. Available in two materials: polyethylene for high flexibility and moderate strength, and nylon for less flexibility and more strength with high resistance to temperature and chemicals.

Polyethylene ties are stocked in red and

available in natural, black, blue, and yellow. Nylon ties are stocked in natural and also available in black. Please specify colour when ordering.

An adhesive backed mounting platform (Part No. **MPBTA**) is also available. Moulded of natural nylon, it may also be screw mounted.

Part No.	Overall Length	Max. Bundle Diameter	Tensile Strength (lbs.)	Min. Order Qty.
<b>Polyethylene</b>				
4E	4-5/32	1-1/8	10	1,000
5E	5	1-3/8	10	1,000
6E	6-1/2	1-7/8	18	1,000
8E	8-11/16	2-1/2	18	1,000
10E	10-11/16	3	18	1,000
14E	14	4	18	500
<b>Nylon</b>				
4N	4-1/4	1-1/8	40	1,000
5N	5-3/32	1-3/8	40	1,000
6N	6-19/32	1-7/8	75	1,000
8N	8-7/8	2-1/2	75	1,000
10N	10-27/32	3	75	1,000
14N	14	4	75	500