



# Liquid Tight Connectors

## STRAIGHT

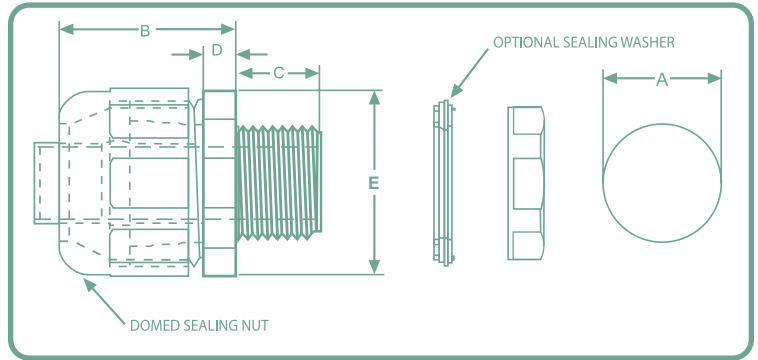
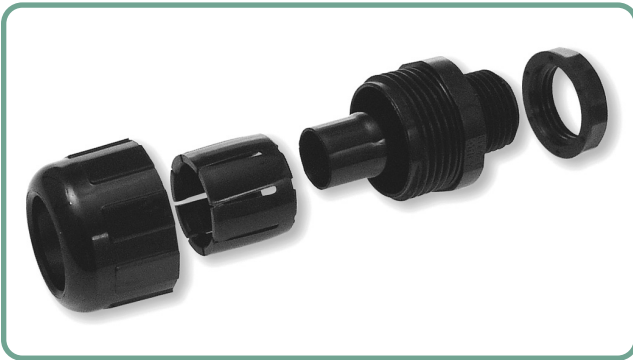


All nylon construction resists salt water, weak acids, gasoline, alcohol, oil, grease and common solvents. No disassembly required. Just push the conduit/tubing onto the ferrule, then tighten the domed sealing nut. This completed assembly can then be secured in the chassis by the locknut (or first secure the connector into an NPT threaded hole). No threading of the conduit or tubing is required, eliminating the chance of cutting the conduit and creating leak paths.

Complete connector is reusable. Use of a sealing washer may be needed for wet locations. **See page 92.**

Suitable for indoor/outdoor use, for original equipment manufacturers or field installers.

Black connectors provided with nylon locknut, packed separately. Gray connectors provided with assembled o-ring and metal locknuts.



Part No.	Fits Conduit Trade Size	A Clearance Hole	B Maximum OA Length	C Thread Length	D Wrenching Nut Thickness	E Wrenching Flats	Sealing Washer
HFC3/8 BL	3/8	.875	1.33	.625	.250	1.30	SW1/2
HFC1/2 BL	1/2	.875	1.33	.625	.250	1.30	SW1/2
HFC3/4 BL	3/4	1.109	1.41	.625	.250	1.52	SW3/4
HFC1 BL	1	1.375	1.47	.781	.250	1.875	SW1
HFC1-1/4 BL*	1-1/4	1.688	2.12	.715	.250	--	--
HFC1-1/2 BL*	1-1/2	1.938	2.42	.680	.250	--	--
HFC2 BL*	2	2.375	2.49	.680	.250	--	--

Standard colour: Black. Also available in Gray. Please substitute GRAY for BL when ordering.

\*Sizes larger than 1" are manufactured in PVC.

## PG THREADED HUB FOR 1/4" TUBING

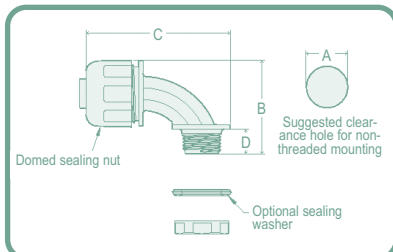
HFC1/4 PG-7	1/4	.492	1.13	.445	.210	.88	SW1/4
-------------	-----	------	------	------	------	-----	-------

Standard colour: Black.

UR only. File #E121095.

# Liquid Tight Connectors CONTINUED

## SWEEP



All the same functions as the straight connectors but offer more flexibility. Complete connector is reusable. Smooth internal surfaces for easier wire installation.

Black connectors provided with nylon locknut, packed separately. Use of a sealing washer may be required for wet locations. **See page 92.** Gray connectors provided with assembled o-ring and metal locknut.

Suitable for indoor/outdoor use, for original equipment manufacturers or field installers.

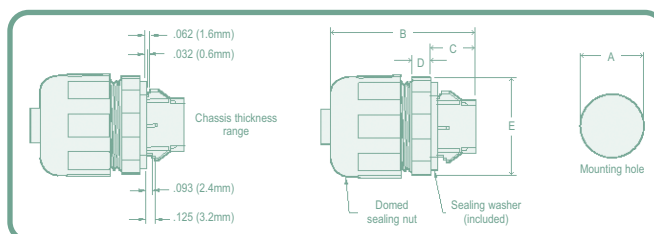
Part No.	Fits Conduit Trade Size	Thread Size	A Clearance Hole	B Maximum OA Height	C Maximum OA Length	D Thread Length	Sealing Washer
HFC3/8-90R*	3/8	1/2 NPT	.875	1.98	2.91	.52	SW1/2
HFC1/2-90R*	1/2	1/2 NPT	.875	1.98	2.91	.52	SW1/2
HFC3/4-90R*	3/4	3/4 NPT	1.109	2.29	3.17	.52	SW3/4
HFC1-90R*	1	1 NPT	1.375	2.83	3.96	.69	SW1
HFC1-1/4-90R	1-1/4	1-1/4 NPT	1.688	4.35	4.71	.64	--
HFC1-1/2-90R	1-1/2	1-1/2 NPT	1.938	4.46	4.69	.66	--
HFC2-90R	2	2 NPT	2.375	4.87	5.31	.67	--

Standard colour: **Black or Gray.**

Sizes larger than 1" are manufactured in PVC.

\*UL and CSA Approved.

## SNAP-IN



All nylon construction resists salt water, gasoline, oil, alcohol, weak acids, grease and common solvents.

Assembly friendly! Just push the conduit or tubing onto the ferrule, then tighten the domed sealing nut. Completed assembly

can then be snapped into the chassis with fingertip pressure. No threading of the conduit or tubing required, eliminating the possibility of cutting the conduit and creating leak paths.

Suitable for indoor/outdoor use. Completely reusable.

Part No.	Fits Conduit Trade Size	A Mounting Hole Diameter	B Maximum OA Length	C Body Length	D Wrenching Nut Thickness	E Wrenching Flats
HFC1/4-S*	1/4	.500	1.500	.445	.219	.875
HFC3/8-S	3/8	.875	2.000	.625	.250	1.328
HFC1/2-S	1/2	.875	2.000	.625	.250	1.328
HFC3/4-S	3/4	1.090	2.031	.625	.250	1.562
HFC1-S	1	1.375	2.250	.781	.250	1.812

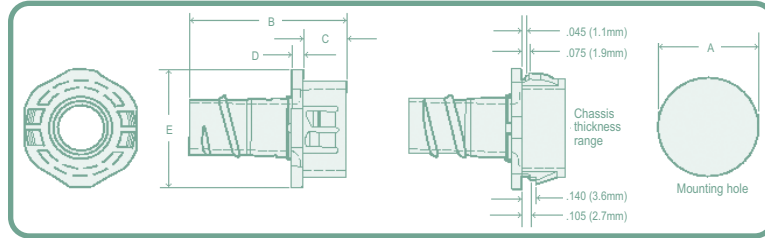
Standard colour: **Black.**

\* recognized only, File #E121095. Consult customer service for chassis thickness range.



# Liquid Tight Connectors CONTINUED

## QUICK TWIST - STRAIGHT SNAP-IN



For use with Heyco Flex conduit and tubing. One-piece solution with smooth internal surfaces for easier wire routing, protection and installation.

All nylon construction resistant to salt water, weak acids, gasoline, alcohol, oil, grease and common solvents.

Easy permanent assembly. Just twist the tubing over the connector ferrule until the tubing clicks into place. No tools required. Unique locking fingers will accommodate various chassis thicknesses.

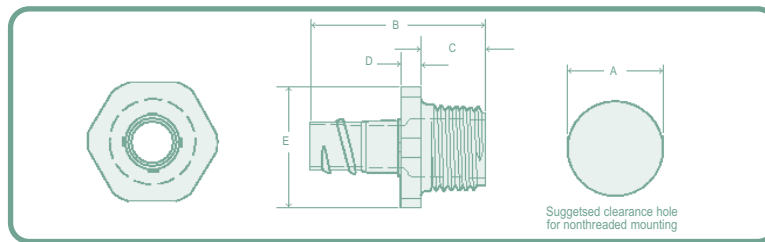
Low cost electrical connector.

Part No.	Trade Size	A Mounting Hole Diameter	B Overall Length	C Body Length	D Wrenching Nuts	E Wrenching Flats
HFC1/4-S Twist	1/4	.540	1.330	.344	.090	.750
HFC3/8-S Twist	3/8	.875	1.376	.391	.090	1.000
HFC1/2-S Twist	1/2	.875	1.376	.391	.090	1.000
HFC3/4-S Twist	3/4	1.093	1.495	.390	.090	1.250

Standard Colours: Black or Gray.

Recognized under the Component Program of Underwriters' Laboratories File #E121095.

## QUICK TWIST - STRAIGHT NPT THREAD



Part No.	Trade Size	A Clearance Hole	B Max. Overall Length	C Thread Length	D Wrenching Nuts	E Wrenching Flats
HFC1/4NPTTwist	1/4	.540	1.560	.465	.200	.750
HFC3/8NPTTwist	3/8	.875	1.720	.625	.200	1.180
HFC1/2NPTTwist	1/2	.875	1.720	.625	.200	1.180
HFC3/4NPTTwist	3/4	1.109	1.840	.625	.200	1.370

Standard Colours: Black or Gray.

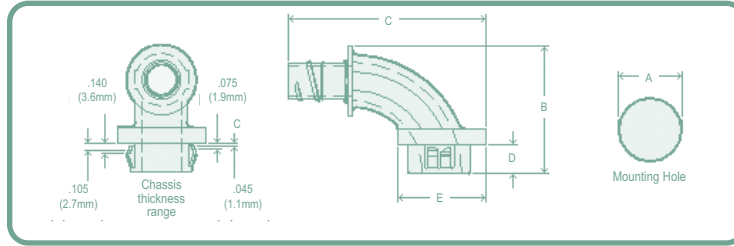
Locknuts not included.

Listed under Underwriters' Laboratories File #E28430. UL approval pending for 1/4 NPT size.



# Liquid Tight Connectors CONTINUED

## QUICK TWIST - SWEEP SNAP-IN



For use with Heyco Flex conduit and tubing. One-piece solution with smooth internal surfaces for easier wire routing, protection and installation around corner angles.

All nylon construction resistant to salt water, weak acids, gasoline, alcohol, oil, grease and common solvents.

No tools needed. Twist the tubing over connector ferrule until the tubing 'clicks' into place. Unique locking fingers accommodate various chassis thicknesses.

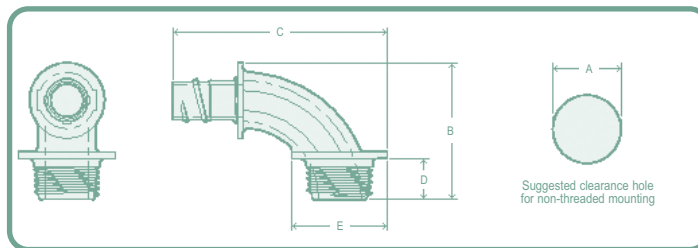
Low cost electrical connector.

Part No.	Trade Size	A Mounting Hole Diameter	B Overall Height	C Overall Length	D Body Length	E Flange Diameter
HFC3/8-S-90 Twist	3/8	.875	1.754	2.749	.390	1.230
HFC1/2-S-90 Twist	1/2	.875	1.754	2.749	.390	1.230
HFC3/4-S-90 Twist	3/4	1.093	1.965	3.081	.390	1.500

Standard Colours: Black or Gray.

Recognized under the Component Program of Underwriters' Laboratories File #E121095.

## QUICK TWIST - SWEEP NPT THREAD



Part No.	Trade Size	A Clearance Hole	B Overall Height	C Overall Length	D Thread Length	E Flange Diameter
HFC3/8NPT-90 Twist	3/8	.875	1.754	2.749	.521	1.230
HFC1/2NPT-90 Twist	1/2	.875	1.754	2.749	.521	1.230
HFC3/4NPT-90 Twist	3/4	1.109	2.105	3.081	.530	1.500

Standard Colours: Black or Gray.

Locknuts not included.

Listed under Underwriters' Laboratories File #E28430.