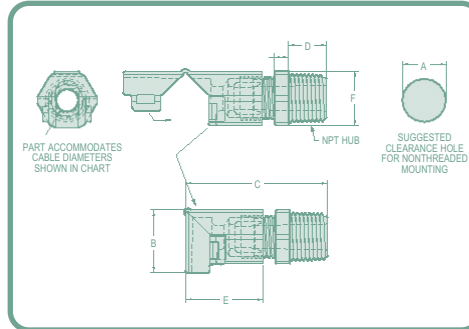
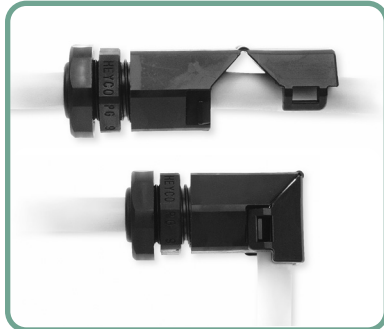




Right-Angle Liquid Tight Fittings

PG HUBS FOR FLEXIBLE CORDS (LOCKNUTS INCLUDED)



Each cordgrip is moulded in the open position for ease of installation. After cable insertion, the fitting snaps closed, bending the cable without damage, saving considerable time and money.

Part design provides liquid tight integrity even in the open position. Acme threads on body prevent skipping and speed installation. All-nylon with TPE gland, resists salt water, weak acids, gasoline, oil, alcohol, grease and common solvents. This feature is not assessed by UL certification and testing.

Available in metric.

Part No.		Cable Dia. Range Min.-Max.	Thread Type & Size	A Clearance Hole	B Right Angle Angle Ht.	C (Closed) Max. O.A Length	D Thread Length	E Sealing Nut Length	F Wrenching Flats
Black	Gray								
†M8530	†M8531	.062 -.210	PG7-90	.492	.69	1.53	.33	.86	.59
†M8532	†M8533	.114 -.250							
†M8534	†M8535	.069 -.187	PG 9-90	.599	.88	1.77	.34	1.07	.75
†M8536	†M8537	.181 -.305							
†M8538	†M8539	.078 -.260	PG11-90	.733	.99	1.99	.39	1.23	.86
†M8540	†M8541	.230 -.375							
†M4542	†M4553	.095 -.260	PG13.5-90	.804	1.06	2.20	.41	1.38	.95
**M8542	**M8543	.170 -.470							

To order locknuts separately, see page 92.

NPT HUBS FOR FLEXIBLE CORDS (LOCKNUTS NOT INCLUDED)

Part No.		Cable Dia. Range Min.-Max.	Thread Type & Size	A Clearance Hole	B Right Angle Angle Ht.	C (Closed) Max. O.A Length	D Thread Length	E Sealing Nut Length	F Wrenching Flats
Black	Gray								
†M4560	†M4561	.065 -.220	1/4-90 NPT	.540	.69	1.66	.45	.86	.63
†M4562	†M4563	.115 -.250							
†M8560	†M8561	.069 -.187	3/8-90 NPT	.670	.88	1.96	.53	1.07	.75
†M8562	†M8563	.181 -.305							
†M4564	†M4565	.095 -.260	1/2-90 NPT	.875	1.06	2.40	.62	1.38	.95
**M8564	**M8565	.170 -.450							

To order locknuts separately, see page 92.

†US and foreign patents pending.

**UL Listed Underwriters Laboratories.