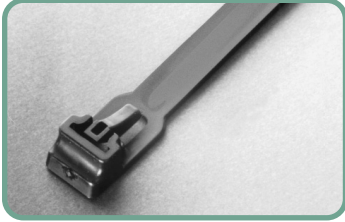




# Nylon Cable Ties CONTINUED

## RELEASABLE

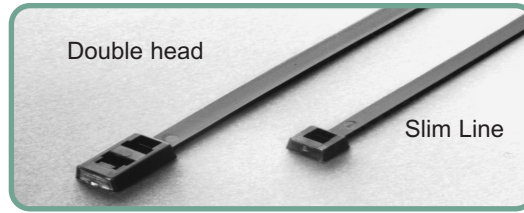
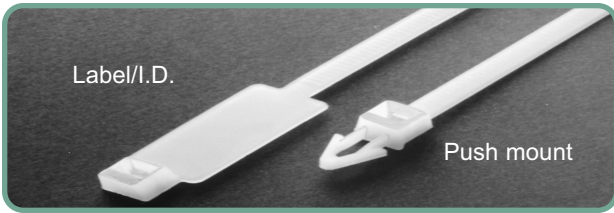


Ideal for use in prototype construction and in areas requiring servicing or addition of wires in existing situations.

Part No.	Overall Length	Maximum Bundle Diameter	Tensile Strength (lbs.)
RT 5-50	5-1/2	1-1/4	50
RT 6-50	6-1/2	1-3/8	
RT 8-50	8-1/2	2	
RT 9-50	10	2-1/2	
RT 15-150	15	4	175
RT 21-150	21	6	
RT 32-150	32	9	
RT 9-250	9	2	250
RT 20-250	20	5	
RT 22-250	23	6	
RT 29-250	29	8	
RT 35-250	35	10	
RT 41-250	40	12	

Minimums available on request.

## BAR-LOK®



Part No.	Type	Length	Maximum Bundle Diameter	Min. Tensile Strength (lbs)
D 10325	Slim Line	8	2.125	18
D 10425	Double Head	7.5	1.750	50
D 10430	Double Head	11	3.000	50
D 8412	Label / I.D.	4	.875	18
D 8413	Label / I.D.	7.5	1.750	50
D 8414	Push Mount	7.5	1.750	50
D 10355	Push Mount	11	3.000	50

Minimum order 1000.  
Packed in bags of 1000 only.