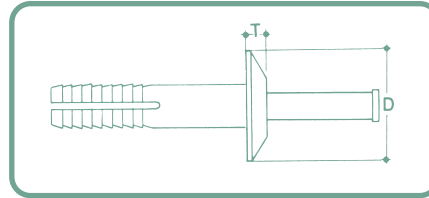
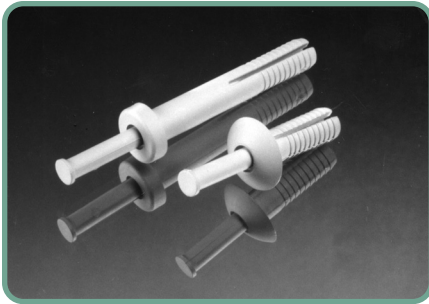


Nylon Anchor Rivets (2-PIECE)



Corrosion and vibration resistant blind fastener, with a nylon drive pin that offers better thermal and electrical qualities than metal pins. This versatile and inexpensive rivet is quickly installed in pre-drilled holes. Driving the pin home with the tap of a hammer expands and seats the fastener securely.

Typically used with signs, electrical and plumbing fixtures, drapery and window hardware, railings, shelves and in many facets of trailer construction.

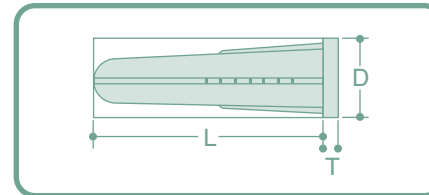
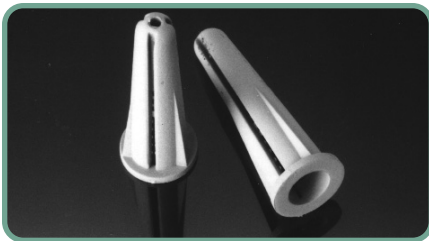
Part No.		Length	Drill Hole
Mushroom	Truss		
PAM 412	PAT 412	3/4	
PAM 416	PAT 416	1	1/4
PAM 424	PAT 424	1-1/2	
Round			
PAR 412		3/4	
PAR 416		1	1/4
PAR 424		1-1/2	
Flat			
PAF 409		9/16	1/4
PAF 412		3/4	1/4

Head Dimensions

	D	T
Mushroom	.550	.110
Truss	.610	.110
Round	.425	.125
Flat	.437	.108

Minimum order 1000.

Nylon Wall Plugs (SCREW ANCHORS)



The expanded rim prevents the loss of the wall plugs inside the hole. Non-twist fins keep them firmly in place and stop rotation.

For use with wood, concrete, tile, brick, sheet metal. Use with wood or sheet metal screws.

Part No.	Drill	L	D	T
WP 6-8	3/16	7/8	5/16	.037
WP 10-12	1/4	11/16	3/8	.037
WP 14-16	5/16	1-3/8	7/16	.037

Minimum order 1000.

Can be colour-coded (not colour-matched) where quantities warrant.



Screw-In Nylon Wall Anchor



Self-drilling point cuts right into 3/8"-5/8" drywall by simply screwing it in. Flush, low profile, phillips countersunk head to be used in combination with a self-tapping screw or screw eye.

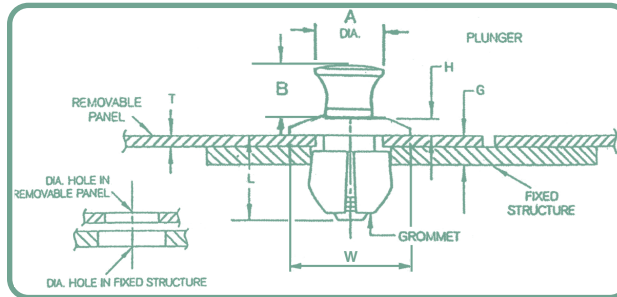
No pre-drilling of hole required. Deep coarse threads create strong engagement and hold. Replaces plastic conical anchors where more strength is required. Minimum required screw length for both #6 and #8 is 3/4".

Available in natural nylon.

Part No.	Screw Size	Length
WAZ 6	#6	1-5/16
WAZ 8	#8	1-11/16



Snap Latch Fasteners



Use these versatile fasteners when fast, simple latching is needed in metal, wood and synthetics. They install and operate in seconds without the need for tools. They can even compensate for mislocated or mismatched holes. Ideal for rush jobs in the field.

Grommet

Plunger

Part No.	Sheet		Capacity		H	L	W Dia.	Hole Diameter		A	B
	T Max.	G Min.	G Max.	Remov. Panel				Fixed Structure			
SL 809	.065	.084	.173	.06	.38	.335	.242 -.238	.254 -.250	.28	.10	
SL 810	.065	.084	.173	.06	.38	.335	.242 -.238	.254 -.250	.32	.27	
SL 1010	.098	.118	.207	.062	.44	.425	.299 -.294	.323 -.316	.36	.25	