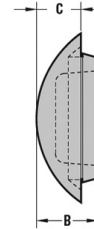
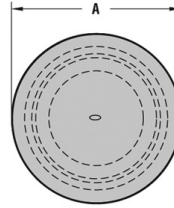


# Liquid Tight Knock-Out Seals

These liquid tight knock-out seals are made of Santoprene 251-80 and are oil and rain tight and fully submersible. They lock firmly into boxes up to .125" thick and install with fingertip pressure (no tools required).



Part No.	Trade Size (fraction)	Trade Size (In)	Trade Size (mm)	Mounting Hole Diameter (In)	Mounting Hole Diameter (mm)	A Head Diameter (In)	A Head Diameter (mm)	B Overall Height (In)	B Overall Height (mm)	Max. Chassis Thickness (In)	Max. Chassis Thickness (mm)	C Head Thickness (In)	C Head Thickness (mm)
KOS-LT1/2	1/2	0.500	12.70	0.875	22.23	1.281	32.54	0.500	12.70	0.125	3.18	0.359	9.12
KOS-LT3/4	3/4	0.750	19.05	1.093	27.76	1.531	38.89	0.546	13.87	0.125	3.18	0.390	9.91
KOS-LT1	1	1.000	25.40	1.375	34.93	1.796	45.62	0.562	14.27	0.125	3.18	0.421	10.69

Standard Colour: Black

Countless Possibilities, Millions Of Solutions  
**(416) 242-6811**