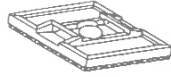




MP4AS



MP 2A
MP2S



MP 4A
MP 4S



MPPM250



MPS68
MPS10



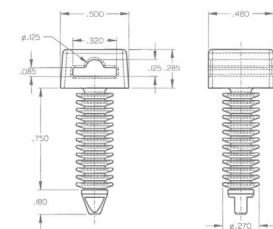
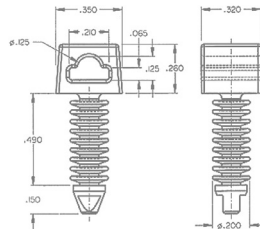
MPLPM

Part No.	Mounting Style	Screw Size (In)	Screw Size (mm)	Base Size (fraction)	Base Size (In)	Base Size (mm)
MP4A-S	adhesive	—	—	51/64 sq.	0.797 sq.	20.24 sq.
MP2A	adhesive (w/opt. screw mt.)	(6)	152.40	1-7/64 sq.	1.109 sq.	28.17 sq.
MP2S	screw	6	152.40	1-7/64 sq.	1.109 sq.	28.17 sq.
MP4A	adhesive (w/opt. screw mt.)	(6)	152.40	1-9/64 sq.	1.141 sq.	28.98 sq.
MP4S	screw	6	152.40	1-9/64 sq.	1.141 sq.	28.98 sq.
MPPM250*	push mount	—	—	3/8 x 5/8 head	0.375 x 0.625 head	9.53 x 15.88 head
MPS68	screw	6-8	152.40 - 203.30	25/64 x 39/64	0.391 x 0.609	9.93 x 15.47
MPS10	screw	10	254.00	5/8 x 7/8	0.625 x 0.875	15.88 x 22.23
MPLPM	screw	8	203.30	31/64 x 47/64	0.484 x 0.734	12.30 x 18.64

Minimum order 500.

Colour: Stocked in natural white. Black available at an additional charge.

Ribbed Push Mount Platform



Moulded in black UV-stabilized high-density polyethylene, these push mounts are available in 2 sizes for 3/16" and 1/4" diameter holes. The special head configuration allows for use with beaded ties, as well as conventional cable ties. They are suitable for use in pre-drilled holes in wood, masonry and a variety of other materials.

Countless Possibilities, Millions Of Solutions
(416) 242-6811