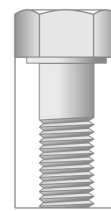
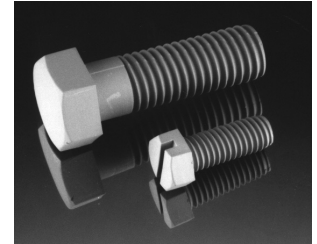
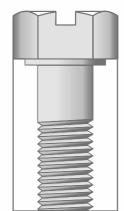


Nylon Hex Bolts (Cap Screws)

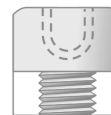
Part No.	Size (fraction)	Size (in)	Size (mm)	Length (fraction)	Length (in)	Length (mm)
B-1420X.375	1/4-20*	0.250	6.35	3/8	0.375	9.53
B-1420X.500	1/4-20*	0.250	6.35	1/2	0.500	12.70
B-1420X.625	1/4-20*	0.250	6.35	5/8	0.625	15.88
B-1420X.750	1/4-20*	0.250	6.35	3/4	0.750	19.05
B-1420X1.000	1/4-20*	0.250	6.35	1	1.000	25.40
B-1420X1.250	1/4-20*	0.250	6.35	1-1/4	1.250	31.75
B-1420X1.500	1/4-20*	0.250	6.35	1-1/2	1.500	38.10
B-1420X2.000	1/4-20*	0.250	6.35	2	2.000	50.80
B-1420X2.500	1/4-20*	0.250	6.35	2-1/2	2.500	63.50
B-1420X3.000	1/4-20*	0.250	6.35	3	3.000	76.20
B-1428X.500	1/4-28	0.250	6.35	1/2	0.500	12.70
B-1428X.625	1/4-28	0.250	6.35	5/8	0.625	15.88
B-1428X.750	1/4-28	0.250	6.35	3/4	0.750	19.05
B-1428X1.000	1/4-28	0.250	6.35	1	1.000	25.40
B-1428X1.250	1/4-28	0.250	6.35	1-1/4	1.250	31.75
B-1428X1.500	1/4-28	0.250	6.35	1-1/2	1.500	38.10
B-51618X.500	5/16-18	0.313	7.94	1/2	0.500	12.70
B-51618X.750	5/16-18	0.313	7.94	3/4	0.750	19.05
B-51618X1.000	5/16-18	0.313	7.94	1	1.000	25.40
B-51618X1.250	5/16-18	0.313	7.94	1-1/4	1.250	31.75
B-51618X1.500	5/16-18	0.313	7.94	1-1/2	1.500	38.10
B-51618X2.000	5/16-18	0.313	7.94	2	2.000	50.80
B-51618X2.500	5/16-18	0.313	7.94	2-1/2	2.500	63.50
B-51618X3.000	5/16-18	0.313	7.94	3	3.000	76.20
B-3816X.500	3/8-16	0.375	9.53	1/2	0.500	12.70
B-3816X.750	3/8-16	0.375	9.53	3/4	0.750	19.05
B-3816X1.000	3/8-16	0.375	9.53	1	1.000	25.40
B-3816X1.250	3/8-16	0.375	9.53	1-1/4	1.250	31.75
B-3816X1.500	3/8-16	0.375	9.53	1-1/2	1.500	38.10
B-3816X2.000	3/8-16	0.375	9.53	2	2.000	50.80
B-3816X2.500	3/8-16	0.375	9.53	2-1/2	2.500	63.50



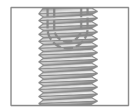
Hex



Slotted Hex



Hex Socket



Socket Set

Add the following suffixes to specify head styles when ordering:

H = hex
SH = slotted hex
HS = hex socket
SS = socket set

Countless Possibilities, Millions Of Solutions
(416) 242-6811

B-3816X3.000	3/8-16	0.375	9.53	3	3.000	76.20
B-1213X.500	1/2-13	0.500	12.70	1/2	0.500	12.70
B-1213X.750	1/2-13	0.500	12.70	3/4	0.750	19.05
B-1213X1.000	1/2-13	0.500	12.70	1	1.000	25.40
B-1213X1.250	1/2-13	0.500	12.70	1-1/4	1.250	31.75
B-1213X1.500	1/2-13	0.500	12.70	1-1/2	1.500	38.10
B-1213X2.000	1/2-13	0.500	12.70	2	2.000	50.80
B-1213X2.500	1/2-13	0.500	12.70	2-1/2	2.500	63.50
B-1213X3.000	1/2-13	0.500	12.70	3	3.000	76.20
B-5811X.500	5/8-11	0.625	15.88	1/2	0.500	12.70
B-5811X1.000	5/8-11	0.625	15.88	1	1.000	25.40
B-5811X2.000	5/8-11	0.625	15.88	2	2.000	50.80
B-5811X4.000**	5/8-11	0.625	15.88	4	4.000	101.60
B-3410X.750	3/4-10	0.750	19.05	3/4	0.750	19.05
B-3410X4.000**	3/4-10	0.750	19.05	4	4.000	101.60
B-3410X5.500	3/4-10	0.750	19.05	5-1/2	5.500	139.70
B-789X.750	7/8-9	0.875	22.23	3/4	0.750	19.05
B-789X4.500**	7/8-9	0.875	22.23	4-1/2	4.500	114.30

Minimum order: Hex Head: 100, Slotted Hex: 500

Hex Socket and Socket Set available at additional charge. Minimum order 1000

* Also available in socket head and Phillips fillister.

**Fully threaded.

Longer lengths available.

Thread length:

Bolts are usually threaded as follows: (Diameter x 2) + 1/2 inch.

Technical Data

Size (fraction)	Size (in)	Size (mm)	Ultimate Torque	Maximum Torque Before Deformation	Tensile Test		Double Shear	
					Yield lbs.	Break lbs.	Yield lbs.	Break lbs.
1/4-20	0.250	6.35	19 In. Lbs.	15-16 In. Lbs.	200	228	413	432
5/16-18	0.313	7.94	37 In. Lbs.	32-34 In. Lbs.	403	424	866	880
3/8-16	0.375	9.53	49 In. Lbs.	45-46 In. Lbs.	480	513	1108	1173
1/2-13	0.500	12.70	11 Ft. Lbs.	7-8 Ft. Lbs.	1393	1425	2276	2313
5/8-11	0.625	15.88	22 Ft. Lbs.	18-19 Ft. Lbs.	2260	2303	3340	3410

All tests performed per ASTM specifications. Parts moulded in Nylon 6/6 Dupont Zytel 101, dry as moulded, unmoisturized, at 73°F. Results are average of random parts tested.

Nominal Dimensions (Inches)

Head Type		Thread Size																	
		#4		#6		#8		#10		1/4		5/16		3/8		1/2		5/8	
		(in)	(mm)	(in)	(mm)	(in)	(mm)	(in)	(mm)	(in)	(mm)	(in)	(mm)	(in)	(mm)	(in)	(mm)	(in)	(mm)
Hex & Slotted Hex	HCH	—	—	—	—	—	—	—	—	0.175	4.445	0.215	5.461	0.250	6.35	0.320	8.128	0.390	9.906
	HCD									0.500	12.7	0.555	14.097	0.625	15.875	0.850	21.59	1.100	27.94
	HCF									0.425	10.795	0.485	12.319	0.565	14.351	0.740	18.796	0.935	23.749

Countless Possibilities, Millions Of Solutions
(416) 242-6811

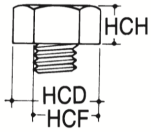
62 Densley Avenue, Toronto, Ontario Canada M6M 5E1

cordscanada.com

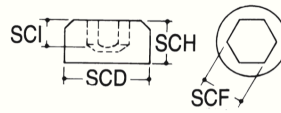
Hex Socket	SCH	0.110	2.794	0.136	3.454	0.162	4.115	0.188	4.775	0.248	6.299	0.310	7.874	0.370	9.398	0.495	12.573	0.620	15.748
	SCD	0.180	4.572	0.222	5.639	0.265	6.731	0.310	7.874	0.370	9.398	0.465	11.811	0.560	14.224	0.745	18.923	0.930	23.622
	SCF	0.094	2.388	0.109	2.769	0.141	3.581	0.156	3.962	0.188	4.775	0.250	6.35	0.313	7.950	0.375	9.525	0.500	12.7
	(SCI)	0.051	1.295	0.064	1.626	0.077	1.956	0.090	2.286	0.120	3.048	0.150	3.81	0.180	4.572	0.240	6.096	0.305	7.747
Socket Set	SSF	0.050	1.27	0.062	1.575	0.078	1.981	0.094	2.388	0.125	3.175	0.156	3.962	0.188	4.775	0.250	6.35	0.312	7.925
	(SSI)	0.070	1.778	0.080	2.032	0.090	2.286	0.100	2.54	0.125	3.175	0.156	3.962	0.188	4.775	0.250	6.35	0.312	7.925

Data listed is for reference purposes only.

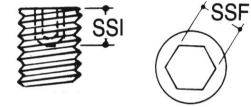
Hex & Slotted Hex



Hex Socket



Socket Set



Countless Possibilities, Millions Of Solutions
(416) 242-6811