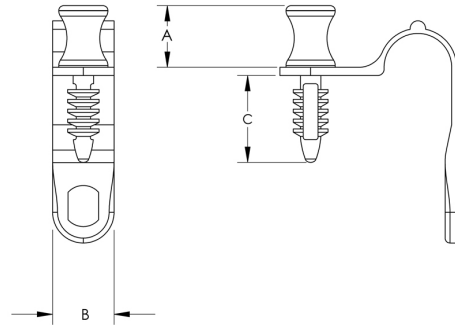


Nylon Quick Cable Clamps

Moulded of nylon 6/6, these quick cable clamps are designed for one-handed installation. The design features an integrated ratchet fastener which eliminates the need for a screw or other fastener. They are self-aligning and the built-in handle allows for quick and easy installation without tools. Suitable for many different wire, cable or tubing routing applications. Perfect for field jobs. Designed to fit a 3/16" diameter hole.



Part No.	A (In)	A (mm)	B (In)	B (mm)	C (In)	C (mm)	D (In)	D (mm)	E (In)	E (mm)	Max Bundle Dia. (fraction)	Max Bundle Dia. (In)	Max Bundle Dia. (mm)	Rated Static Load (lb)
K21-0188	0.740	18.80	0.620	15.75	0.080	2.03	0.335	8.51	0.390	9.91	3/16	0.188	4.76	1/2
021-0250	1.000	25.40	0.870	22.10	0.100	2.54	0.420	10.67	0.630	16.00	1/4	0.250	6.35	3/4
021-0375	1.000	25.40	1.000	25.40	0.090	2.29	0.500	12.70	0.630	16.00	3/8	0.375	9.53	1
021-0500	1.000	25.40	1.210	30.73	0.110	2.79	0.680	17.27	0.640	16.26	1/2	0.500	12.70	1-1/4
021-0750	1.150	29.21	1.450	36.83	0.125	3.18	0.990	25.15	0.640	16.26	3/4	0.750	19.05	1-3/4
021-1000	1.980	50.29	2.240	56.90	0.140	3.56	1.370	34.80	1.260	32.00	1	1.000	25.40	4
021-1500	2.420	61.47	2.950	74.93	0.150	3.81	1.770	44.96	1.310	33.27	1-1/2	1.500	38.10	6

Countless Possibilities, Millions Of Solutions
(416) 242-6811