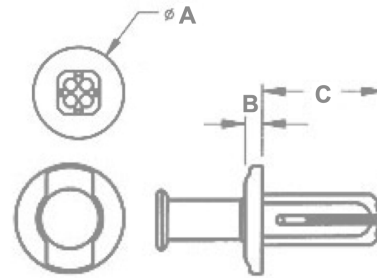
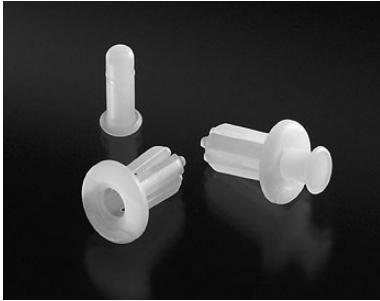


Two-Piece Removable Rivets

These two-piece nylon rivets can be removed by retracting the pin and then the body. The body incorporates a slot line with the pin so that the pin can be removed by inserting a small screwdriver or even a fingernail or other sharp object underneath the head of the pin.



Part No.	A Head Diameter (fraction)	A Head Diameter (In)	A Head Diameter (mm)	B Head Thickness (In)	B Head Thickness (mm)	C Prong Length (fraction)	C Prong Length (In)	C Prong Length (mm)	Hole Size (In)	Hole Size (mm)	Panel Thickness (fraction)	Panel Thickness (In)	Panel Thickness (mm)
PPR-188-062	3/8	0.375	9.53	0.070	1.78	1/2	0.500	12.70	0.188	4.78	1/16	0.063	1.59
PPR-188-125	3/8	0.375	9.53	0.070	1.78	1/2	0.500	12.70	0.188	4.78	1/8	0.125	3.18
PPR-250-500*	7/16	0.438	11.11	0.070	1.78	1/2	0.500	12.70	0.250	6.35	1/16	0.063	1.59
PPR-250-125	7/16	0.438	11.11	0.070	1.78	1/2	0.500	12.70	0.250	6.35	1/8	0.125	3.18
PPR-250-188	7/16	0.438	11.11	0.070	1.78	1/2	0.500	12.70	0.250	6.35	3/16	0.188	4.76

*In addition to working in a .250 hole, this part will also fit the .210/.218" square hole found in the 'darling' type shelf commonly used in retail stores.

Countless Possibilities, Millions Of Solutions
(416) 242-6811